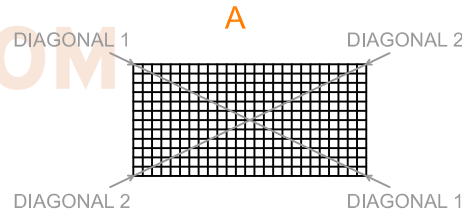


# WOVEN MESH PANELS: MEASUREMENTS & TOLERANCES

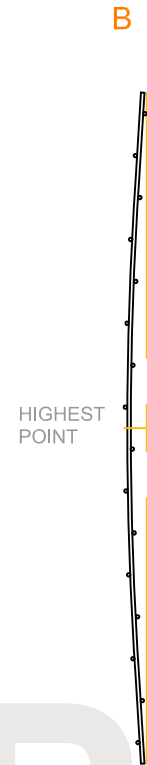
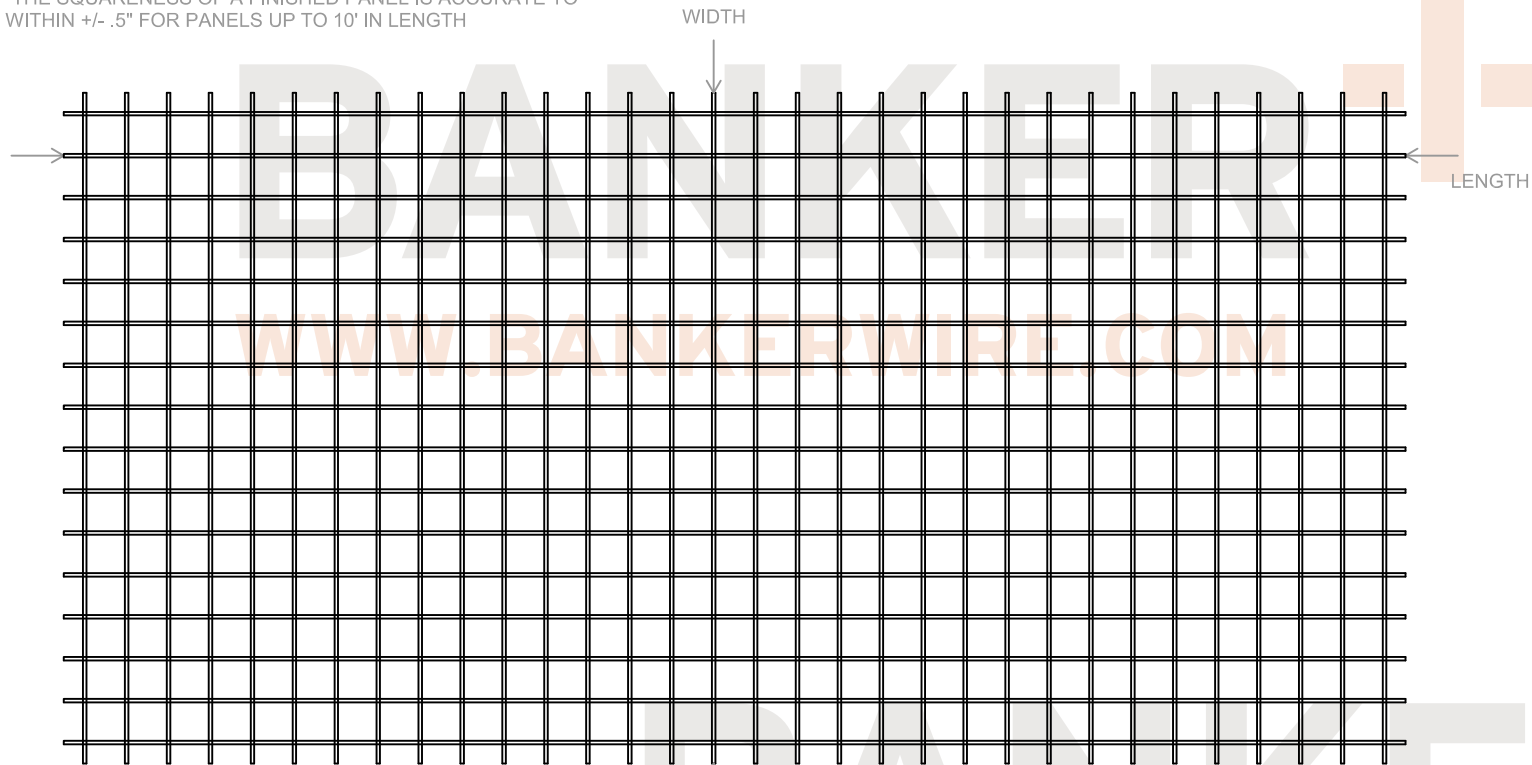
BANKER WIRE HAS DEVELOPED A SET OF STANDARD TOLERANCES FOR WOVEN WIRE PANELS. THE TOLERANCES SHOWN BELOW WERE DETERMINED FROM HISTORICAL PRODUCT AND ARE CONTINUALLY BEING TESTED AND IMPROVED UPON. ASIDE FROM THESE DEVELOPED TOLERANCES, BANKER WIRE MEETS AND EXCEEDS THE STANDARD TOLERANCES SET FORTH IN ASTM STANDARD E2016-06: STANDARD SPECIFICATION FOR INDUSTRIAL WOVEN WIRE CLOTH.

**WIDTH:**  
-THE WIDTH OF A FINISHED PANEL IS ACCURATE TO WITHIN +/- .125"  
**LENGTH:**  
-THE LENGTH OF A FINISHED PANEL IS ACCURATE TO WITHIN +/- .125"  
FOR PANELS UP TO 10' IN LENGTH

**SQUARENESS (SEE "A"):**  
-SQUARENESS OF A PANEL IS DETERMINED BY MEASURING THE CORNER-TO-CORNER DISTANCE IN BOTH DIRECTIONS AND FINDING THE DIFFERENCE BETWEEN THE TWO LENGTHS  
-THE SQUARENESS OF A FINISHED PANEL IS ACCURATE TO WITHIN +/- .5" FOR PANELS UP TO 10' IN LENGTH



**FLATNESS (SEE "B"):**  
-FLATNESS IS DETERMINED BY MEASURING THE HIGHEST POINT ON THE MESH WHEN IT IS PLACED ON THE GROUND  
-WOVEN MESH PANELS ARE FLAT TO WITHIN 1"



**TAIL LENGTH:**  
-IF BALANCED TAILS ARE A REQUIREMENT FOR THE PANEL, THE TAILS WILL BE BALANCED WITHIN +/- .125"

**NON-STANDARD ROLLS:**  
-IF A ROLL OF WOVEN MATERIAL IS REQUIRED TO BE A CERTAIN LENGTH (UNDER 100 LINEAL FEET), THE ROLL LENGTH WILL BE AT LEAST THE REQUIRED LENGTH, PLUS A TOLERANCE OF 1% OF THE TOTAL LENGTH

**OPAQUE MESH:**  
-CERTAIN OPAQUE MESHES (THE "D" SERIES) WILL HAVE A LARGER TOLERANCE FOR SOME OF THE MEASUREMENTS (SPECIFICALLY SQUARENESS AND FLATNESS)