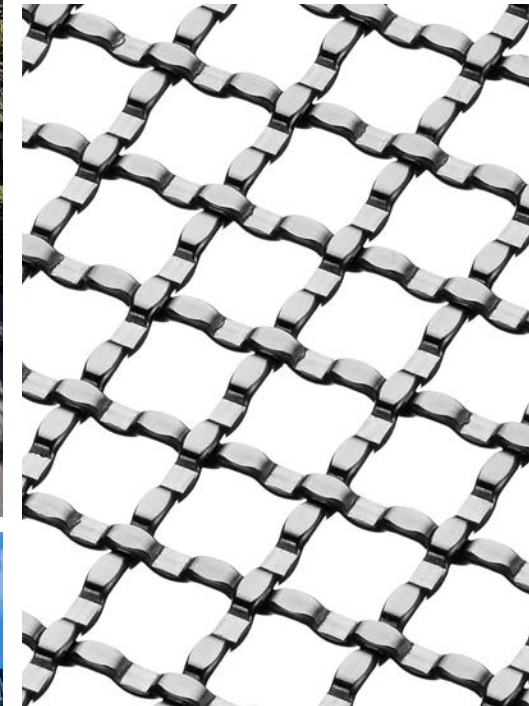


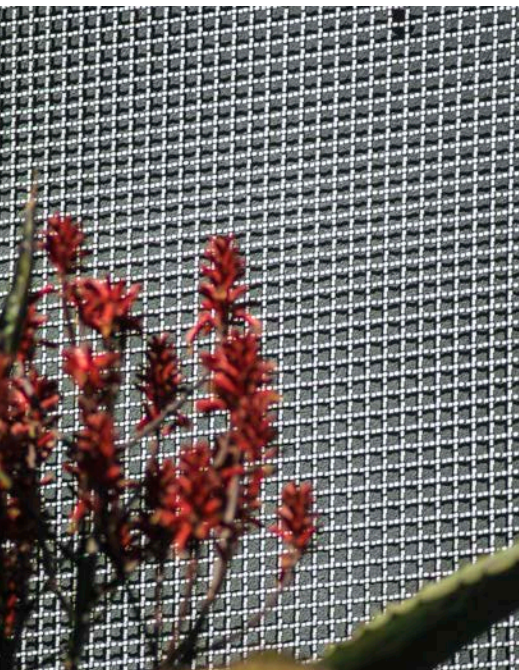
# VENICE BEACH RESIDENCE

Sunscreen/ Façade  
Venice Beach, California, USA

S-9



This residence is intended to create a strong contrast between the prominent industrial urban architecture in Los Angeles and the beautiful landscapes seen throughout Southern California. To achieve this goal, Banker Wire S-9 stainless steel woven wire mesh was used on the facade of the house which acts as a pristine lacy backdrop to the entry garden. This screen glimmers in the light and adds tremendous value to the ephemeral qualities of the unique plants surrounding it; this experience sets the mood for visitors as they move into the spaces beyond the entry. The screen also provides significant shading for the Southwest facade and privacy for the heavily trafficked level O2 hallway which contains a window behind the screen.



**BANKER WIRE**

600 PERKINS DRIVE | MUKWONAGO WI 53149 USA