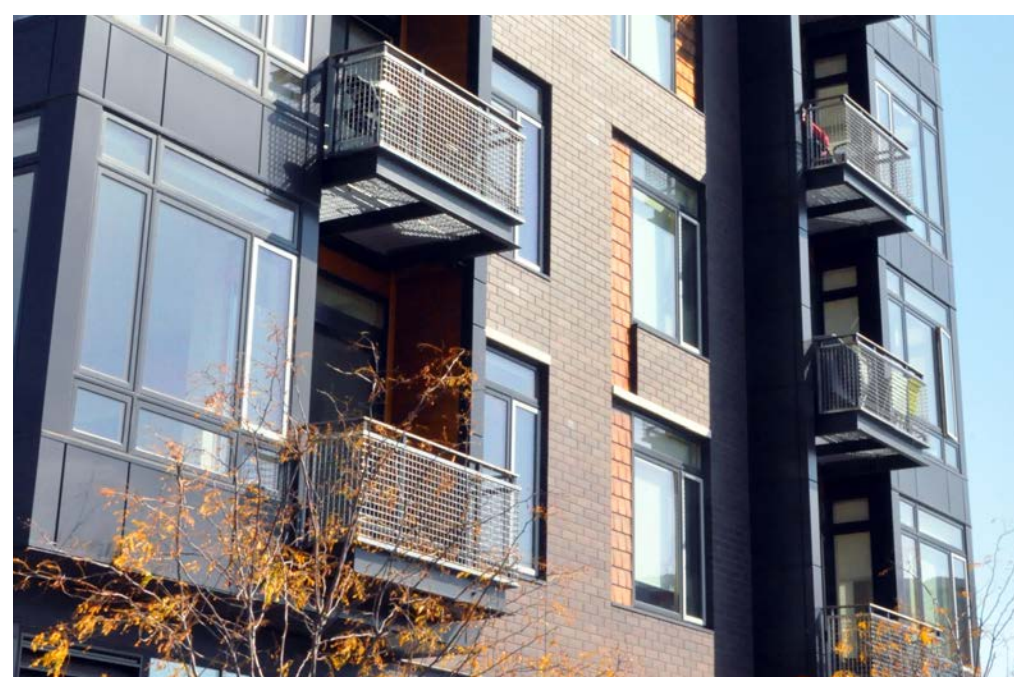


ONE AT NORTH END

Balcony Railing
Milwaukee, Wisconsin USA

L-62



ONE at The North End is the first phase of a Milwaukee downtown neighborhood development designed by Engberg Anderson Architects. The wire mesh balconies for this mixed-use building were integrated into the design as a tailored component with high percent open areas. The L-62 stainless wire mesh was bent at 90 degrees to form the corners, creating a smooth, seamless look. The rigid construction of Banker Wire's lock crimp wire mesh makes this design possible.

Overlooking the Milwaukee River, the \$15.5 million building features 83 residential units. The 97,470 sq.ft. of residential space includes a club room, with attached media room, that opens onto 15,000 sq.ft. of green roof, including a portion dedicated to private walk-out resident patios. An on-site fitness room, attached to the lobby, gives the feel of a hip, urban hotel. The building has 174 heated, enclosed parking spaces and 12,700 sq.ft. of ground floor retail. Phase II is underway.

BANKER WIRE

600 PERKINS DRIVE | MUKWONAGO WI 53149 USA