

# CHERRYVILLE RESIDENCE

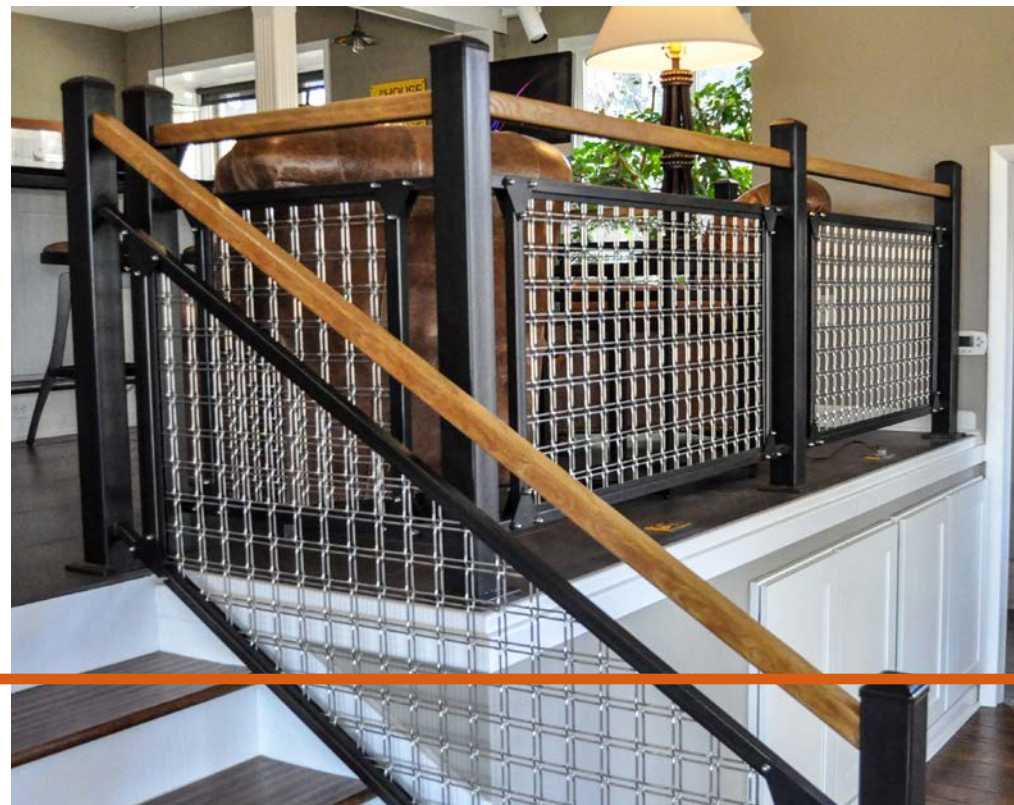
Application Description  
Greenwood Village, Colorado, USA

## M22-27



This project involved two applications within a common living space designed to match and complement one another: a custom hand rail and a modular, suspended chandelier. The appeal of the finished project comes from the simplicity of a three element design palette: Banker Wire's stainless steel architectural wire mesh screen M22-27, black patina carbon steel, and linear grain, clear satin quarter sawn white oak.

The light fixture is six feet by six feet wide, and weighs 170 pounds. The M22-27 woven wire mesh pattern lends its strength and rigidity, as well as subtle beauty to the large chandelier as well as the railing in this home.



**BANKER WIRE**

600 PERKINS DRIVE | MUKWONAGO WI 53149 USA