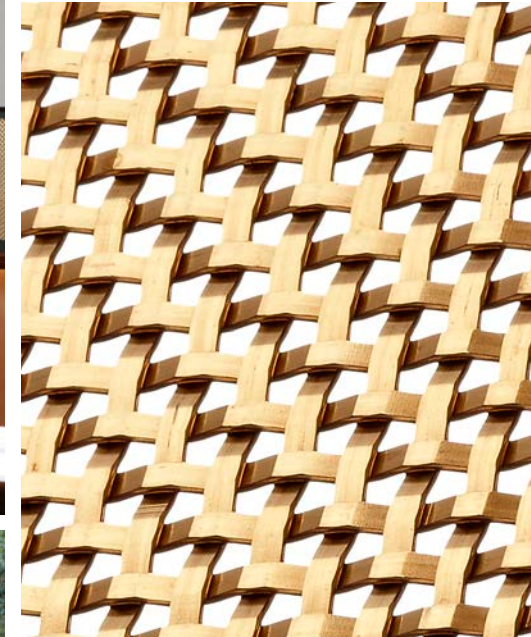


CHAYA DOWNTOWN

Space Dividers
Los Angeles, California USA

S-16



"The bronze wire mesh screen worked perfectly for our intentions on the interior of the space. The typical banquette divider is glass, giving some separation, but allowing the space to remain 'open.' The Banker Wire weave worked in the same way, but with true class. As you can see in the picture, it filters the content on the other side, hinting at the activity like lingerie, but still providing a sense of privacy for those dining next to it. The brass was the other component that worked really well with our design. The restaurant has a large exterior blade of a canopy that pierces the interior of the restaurant. The underside of that canopy is a reddish Spanish Brass. The Banker woven wire bronze allowed us to connect the dots."

-Bryan Bethem, Poon Design

Chaya Downtown in Los Angeles, California recently won the 2009 Restaurant Design Awards presented by the American Institute of Architects (AIA).

BANKER WIRE

600 PERKINS DRIVE | MUKWONAGO WI 53149 USA

