

### SPECIFICATIONS

PERCENT OPEN AREA	44.4 %
*WEIGHT PER SQ FT	1.43 lb
**OPENING LIMITATION	0.250 inches
OVERALL THICKNESS	0.100 inches
ASPECT RATIO	1.00 : 1
CRIMP STYLE	E1E1
MAX SIDE A DIMENSION	168 inches
MAX SIDE B DIMENSION	72 inches

### AVAILABLE ALLOYS

Stainless, Plain Steel, Bronze, Brass

### NOTES

QTY	B	A



**Customization:** Alloy configurations and sheet dimensions may be customizable depending on project design. For more information on the manufacturing capabilities of this mesh, please contact us.

*\*Weight based on the specific density of plain steel.*

*\*\*Maximum sphere diameter which will pass through opening.*

Product specifications are subject to change. Product image is shown at 100% unless stated otherwise. For accuracy, specification sheet must be printed with no scaling. Measurements and data are approximate and should be confirmed with a physical sample.

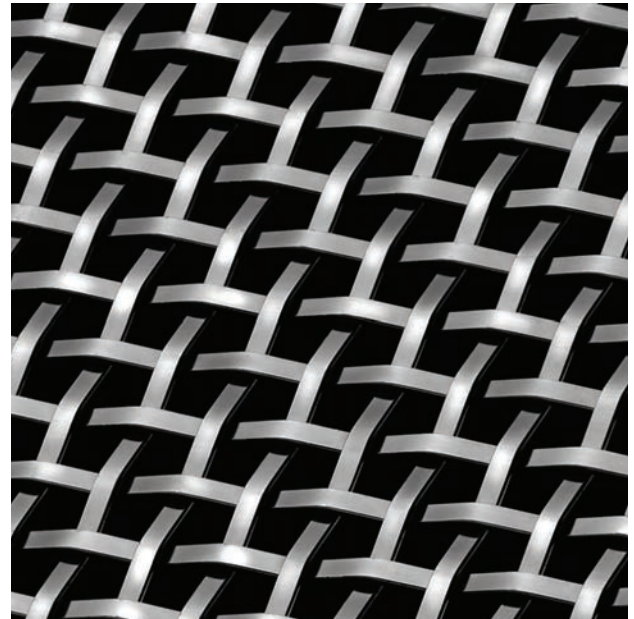
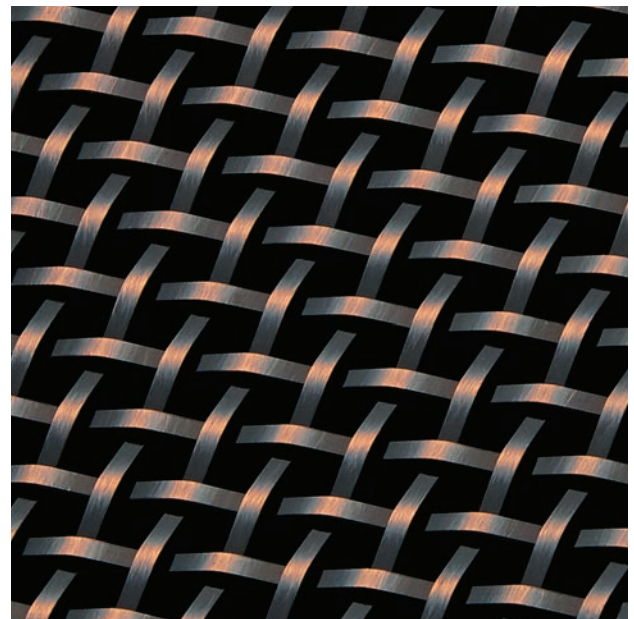
## SECONDARY FINISH OPTION: DECORATIVE PLATING

Maximum Dimensions: 42x92 Inches

Base Alloy Required: Plain Steel

Interior Applications Only

Decorative plating is an electrodeposition process where a thin layer of brass, nickel, chrome, or copper is deposited on the wire mesh surface. A decorative antique plated finish can really bring out the texture of a woven wire mesh in ways that other coatings cannot. The thin layer of metal does not mask the detail of the wire mesh but rather highlights it. The antique plated finish process introduces a dark oxide layer over top of the bright plated alloy. Then, visual depth is created by physically relieving the high points of the wire mesh allowing the bright plated alloy to show through. A thin layer of lacquer is applied after plating to help preserve the finish from further tarnishing.

*S-50, Antique Brass Plated**S-50, Antique Nickel Plated**S-50, Antique Copper Plated**S-50, Black Copper Plated*