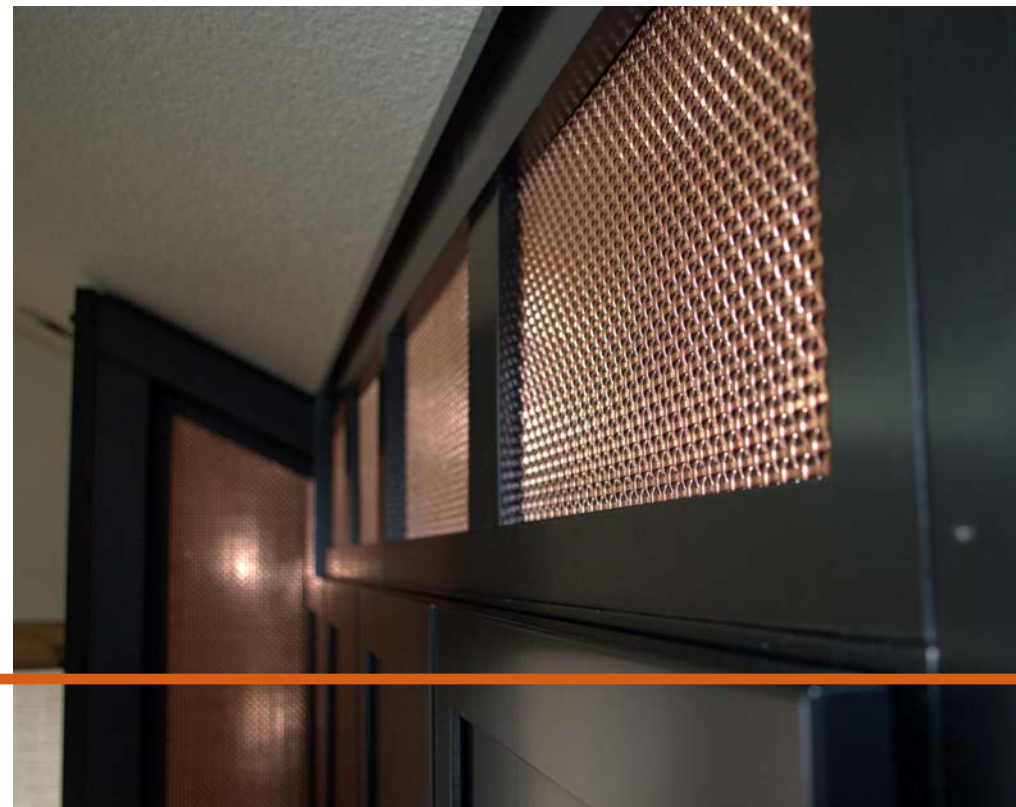
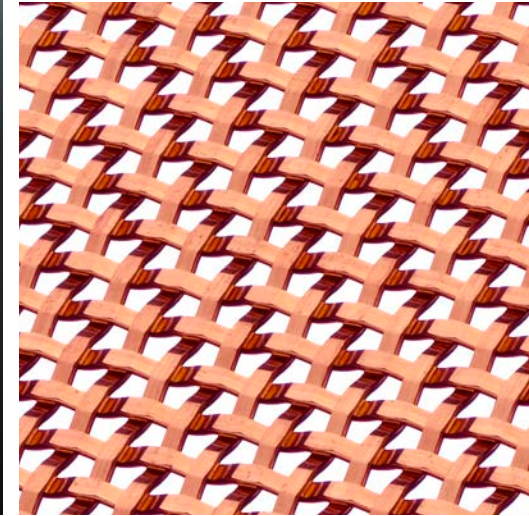


PRIVATE RESIDENCE, MOUNTAIN RETREAT

Cabinetry and Casework
Sandpoint, Idaho, USA

S-16



This stunning fire place and entertainment center in a private, mountain retreat in Idaho, draws on the modern feel of the S-16 woven wire mesh pattern to add a special flare. The homeowners, Rob and Bonnie Chambers, designed the system to hide their freestanding fireplace addition. They wanted a rustic, yet contemporary look, and because of other copper accents in their home they decided to use S-16 in copper. The reflective qualities of S-16 causes light to sparkle off of the flats of the crushed wire, giving the mesh an almost luminescent quality against the black painted wood. These pieces of wire mesh also give a sense of flow to the room and lead the viewer's eyes along the unique fireplace and entertainment system.

"We researched all the architectural wire we could find on the market and no one was comparable to the quality and craftsmanship of Banker Wire. The different options of wire and sizing is amazing. Great product for the price. We are a thousand percent happy with this wire. It's beautiful and was the perfect touch to our remodel!" Rob & Bonnie Chambers, Homeowners

BANKER WIRE

600 PERKINS DRIVE | MUKWONAGO WI 53149 USA