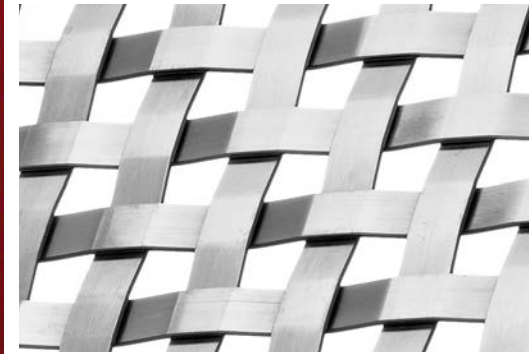


IBI GROUP OFFICE

Interior Wall Cladding
Edmonton, Alberta, Canada

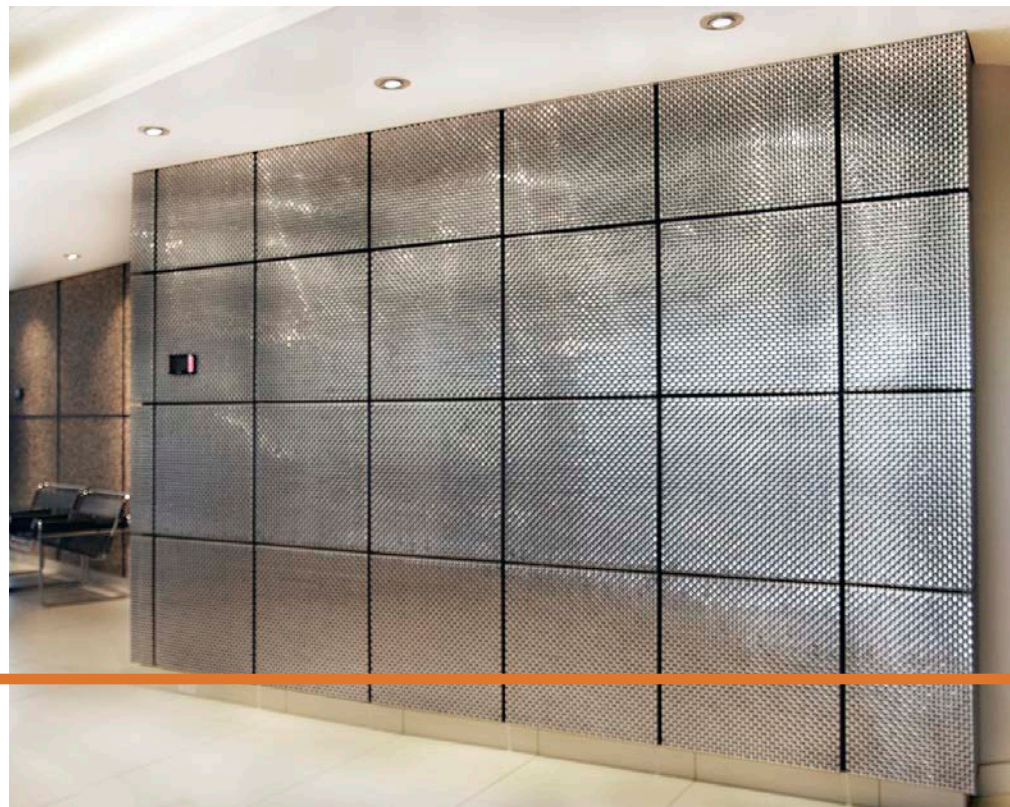
S-18



IBI Group, Canada's largest integrated architectural and engineering firm and the fourth largest in the world, fell in love with the detail and quality of wire mesh while working on a project for one of its clients. So, it was no surprise it used Banker Wire's mesh when it renovated its new office space in Edmonton, Alberta.

The walls in the gallery and technology boardroom were clad with the wire mesh creating an ambiance that inspires creativity. Banker Wire's S-18 architectural woven wire mesh was chosen for this project because of its low percent open area that added a refined reflective quality.

"We wanted to create an interesting gallery area that reflected our expertise. The beauty and richness of the woven wire mesh allowed us to design an impressive element. The scale of the mesh is significant and the fine detail is clean and simple. From a distance, the wire mesh walls look substantial and the stainless steel makes them look rich," said Corry Bent, Senior Interior Designer of IBI Group. "Banker Wire was selected because of the beauty and richness of the woven wire mesh. Everyone that sees the installation always touches and comments on them."



BANKER WIRE

600 PERKINS DRIVE | MUKWONAGO WI 53149 USA